

Purpose

The RT8296A is a high-efficiency current mode synchronous step-down regulator that can deliver up to 3A output current from a wide input voltage range of 4.5V to 23V. This document explains the function and use of the RT8296A evaluation board (EVB) and provides information to enable operation and modification of the evaluation board and circuit to suit individual requirements.

Table of Contents

| | |
|--|-------------|
| <i>Purpose</i> | 1 |
| <i>Introduction</i> | 2 |
| <i>General Product Information</i> | 2 |
| <i>Key Performance Summary Table</i> | 3 |
| <i>Bench Test Setup Conditions</i> | 4 |
| <i>Headers Description and Placement</i> | 4 |
| <i>Test Points</i> | 4 |
| <i>Power-up & Measurement Procedure</i> | 5 |
| <i>Output Voltage Setting</i> | 5 |
| <i>Schematic, Bill of Materials and Board Layout</i> | 6 |
| <i>EVB Schematic Diagram</i> | 6 |
| <i>Bill of Materials</i> | 7 |
| <i>EVB Layout</i> | 8 |
| <i>Other Technical Information</i> | 錯誤! 尚未定義書籤。 |

Introduction

General Product Information

General Description

The RT8296A is a high efficiency, monolithic synchronous step-down DC/DC converter that can deliver up to 3A output current from a 4.5V to 23V input supply. The RT8296A's current mode architecture and external compensation allow the transient response to be optimized over a wide range of loads and output capacitors. Cycle-by-cycle current limit provides protection against shorted outputs and soft-start eliminates input current surge during start-up. The RT8296A also provides output under voltage protection and thermal shutdown protection. The low current (<3 μ A) shutdown mode provides output disconnection, enabling easy power management in battery-powered systems. The RT8296A is available in an SOP-8 (Exposed Pad) package.

Features

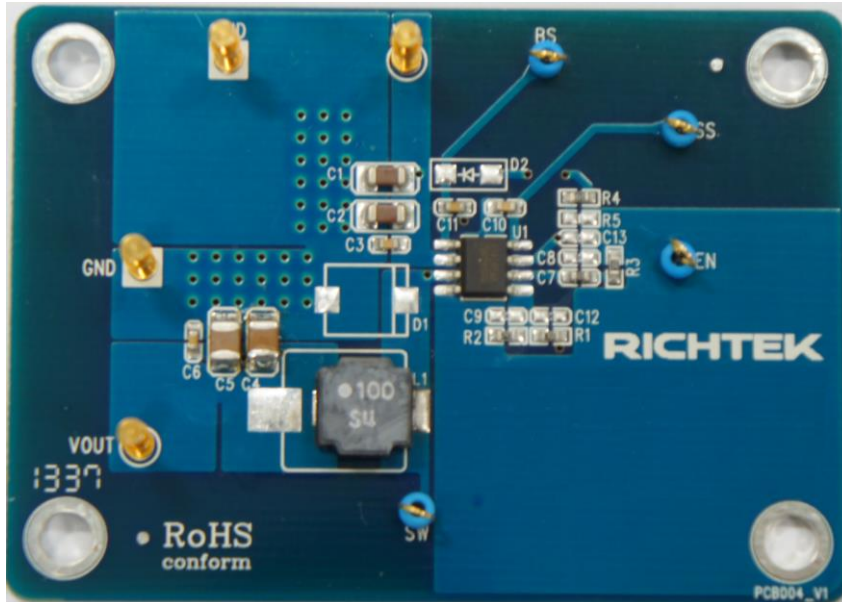
- $\pm 1.5\%$ High Accuracy Feedback Voltage
- 4.5V to 23V Input Voltage Range
- 3A Output Current
- Integrated N-MOSFET Switches
- Current Mode Control
- PWM Frequency Operation : 340kHz
- Output Adjustable from 0.8V to 20V
- Up to 95% Efficiency
- Programmable Soft-Start
- Stable with Low-ESR Ceramic Output Capacitors
- Cycle-by-Cycle Over Current Protection
- Input Under Voltage Lockout
- Output Under Voltage Protection
- Thermal Shutdown Protection

Key Performance Summary Table

| Key features | Evaluation board number: PCB004_V1 |
|--------------------------------|--|
| Default Input Voltage | 12V |
| Max Output Current | 3A |
| Default Output Voltage | 3.3V |
| Default Marking & Package Type | RT8296AHZSP, PSOP-8 (Exposed Pad) |
| Operation Frequency | Steady 340kHz at PWM |
| Other Key Features | 4.5V to 23V Input Voltage Range Programmable Soft-Start PSM/ PWM Auto Switched |
| Protection | Output Under-Voltage Protection (hiccup mode): Cycle-by-cycle Current Limit Thermal Shutdown |

Bench Test Setup Conditions

Headers Description and Placement



Please carefully inspect the EVB IC and external components, comparing them to the following Bill of Materials, to ensure that all components are installed and undamaged. If any components are missing or damaged during transportation, please contact the distributor or send e-mail to evb_service@richtek.com.

Test Points

The EVB is provided with the test points and pin names listed in the table below.

| Test point/ Pin name | Signal | Comment (expected waveforms or voltage levels on test points) |
|-------------------------|-------------------------------|---|
| VIN | Input voltage | Input voltage range= 4.5V to 23V |
| VOUT | Output voltage | Default output voltage = 3.3V Output voltage range= 0.8V to 20V (see " Output Voltage Setting" section for changing output voltage level) |
| SW | Switching node test point | SW waveform |
| EN | Enable test point | Enable signal. EN is automatically pulled high (by R4) to enable operation. Connect EN low to disable operation. |
| BS | Boot strap supply test point | Floating supply voltage for the high-side N-MOSFET switch |
| SS | Soft-start control test point | Soft start waveform |
| GND | Ground | Ground |

Power-up & Measurement Procedure

1. Apply a 12V nominal input power supply ($4.5V < V_{IN} < 23V$) to the VIN and GND terminals.
2. The EN voltage is pulled to logic high by R4 (100k Ω to VIN) to enable operation. Drive EN high (>2.7V) to enable operation or low (<0.4V) to disable operation.
3. Verify the output voltage (approximately 3.3V) between VOUT and GND.
4. Connect an external load up to 3A to the VOUT and GND terminals and verify the output voltage and current.

Output Voltage Setting

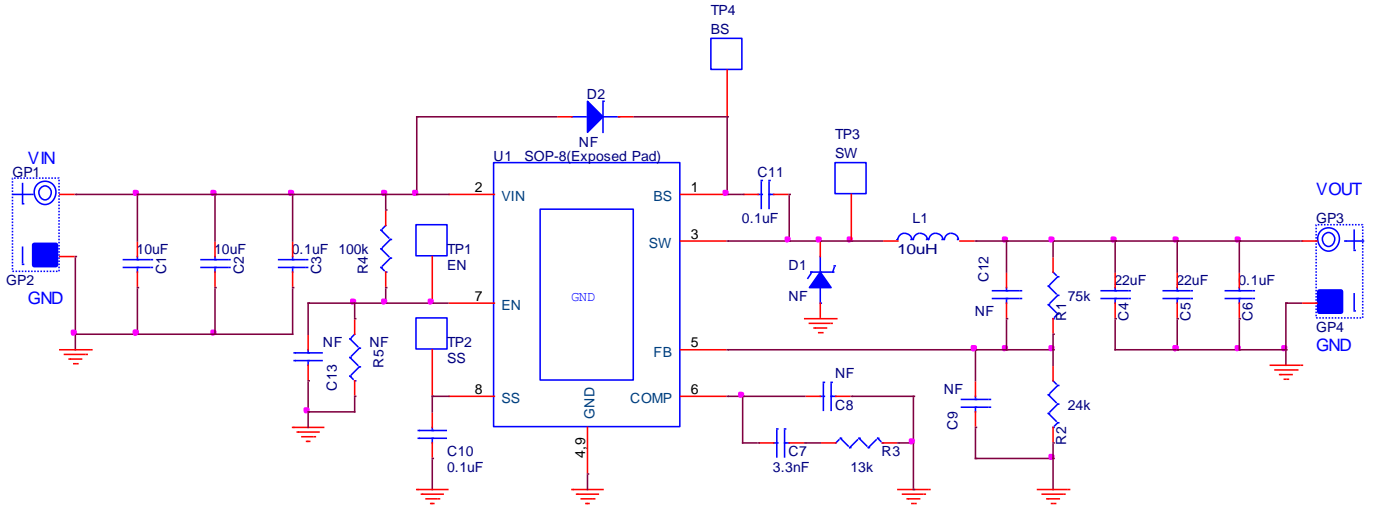
Set the output voltage with the resistive divider (R1, R2) between VOUT and GND with the midpoint connected to FB. The output is set by the following formula:

$$V_{OUT} = 0.8 \times \left(1 + \frac{R1}{R2}\right)$$

The installed VOUT capacitors (C4, C5) are 22 μ F, 16V X5R ceramic types. Do not exceed their operating voltage range and consider their voltage coefficient (capacitance vs. bias voltage) and ensure that the capacitance is sufficient to maintain stability and provide sufficient transient response for your application. This can be verified by checking the output transient response as described in the RT8296 IC datasheet.

Schematic, Bill of Materials and Board Layout

EVB Schematic Diagram



C1, C2: 10µF/50V/X5R, 1206, TDK C3216X5R1H106K

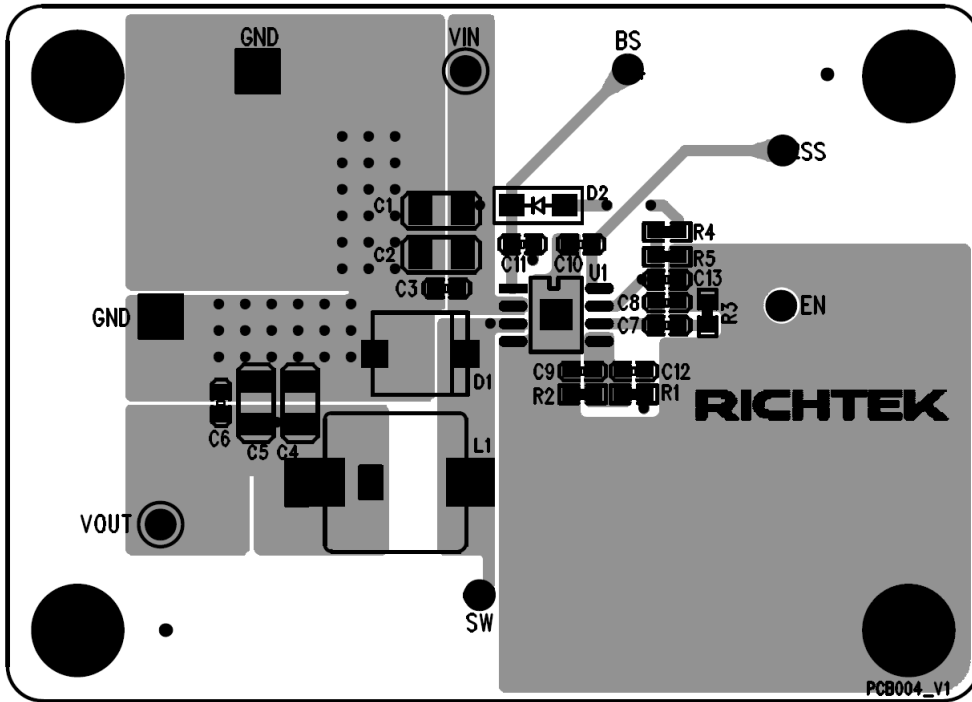
C4, C5: 22µF/16V/X5R, 1210, Murata GRM32ER61C226K

L1: 10µH TAIYO YUDEN NR8040T100M, DCR=34mΩ

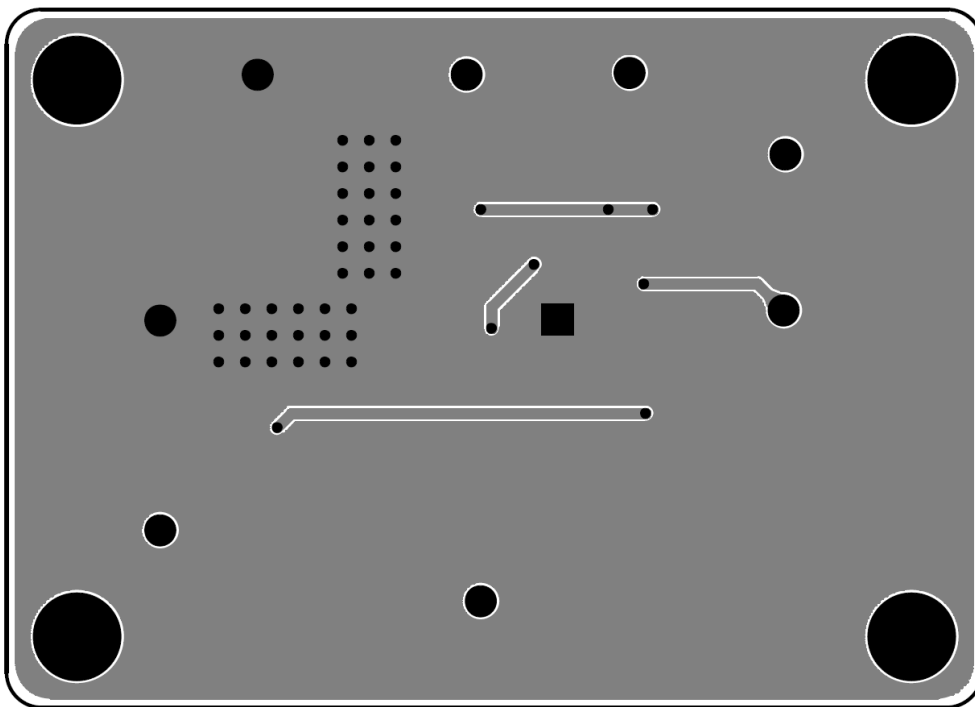
Bill of Materials

| Reference | Qty | Part number | Description | Package | Manufacture |
|-----------------|-----|---------------------|---|-------------|-------------|
| U1 | 1 | RT8296AHZSP | DC-DC Converter | PSOP-8 | Richtek |
| C1, C2 | 2 | C3216X5R1H106K160AB | 10uF/±10%/50V/X5R Ceramic Capacitor | 1206 | TDK |
| C4, C5 | 2 | GRM32ER61C226KE20# | 22uF/±10%/16V/X5R Ceramic Capacitor | 1210 | Murata |
| C7 | 1 | 0603B332K500 | 3.3nF/±10%/50V/X7R Ceramic Capacitor | 0603 | WALSIN |
| C3, C6, C10,C11 | 4 | C1608X7R1H104K080AA | 0.1uF/±10%/50V/X7R Ceramic Capacitor | 0603 | TDK |
| C8,C9,C12,C13 | 0 | | Not Installed | 0603 | |
| L1 | 1 | NR8040T100M | 10uH/3.1A/±20%, DCR=34mΩ, Inductor | 8mmx8mmx4mm | TAIYO YUDEN |
| R1 | 1 | | 75kΩ/±1%, Resistor | 0603 | |
| R2 | 1 | | 24kΩ/±1%, Resistor | 0603 | |
| R3 | 1 | | 13kΩ/±1%, Resistor | 0603 | |
| R4 | 1 | | 100kΩ/±1%, Resistor | 0603 | |
| R5 | 0 | | Not Installed | 0603 | |
| D1, D2 | 0 | | Not Installed | | |
| TP | 4 | | Test Pin | | |
| GP | 4 | | Golden Pin | | |

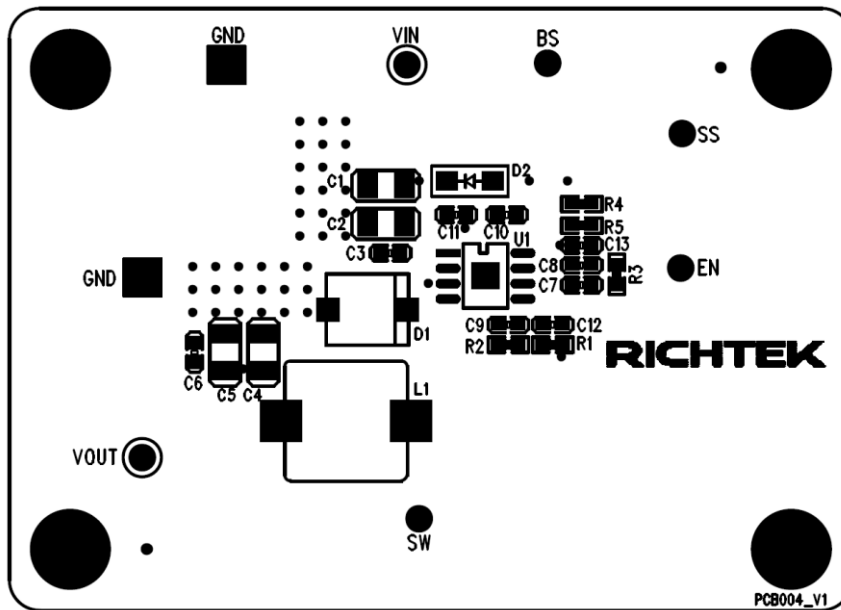
EVB Layout



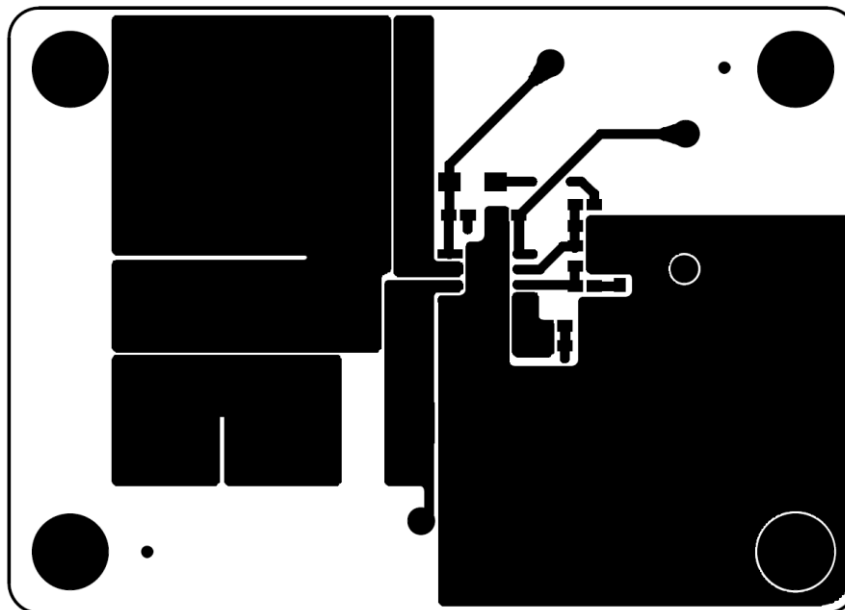
Top View (1st layer)



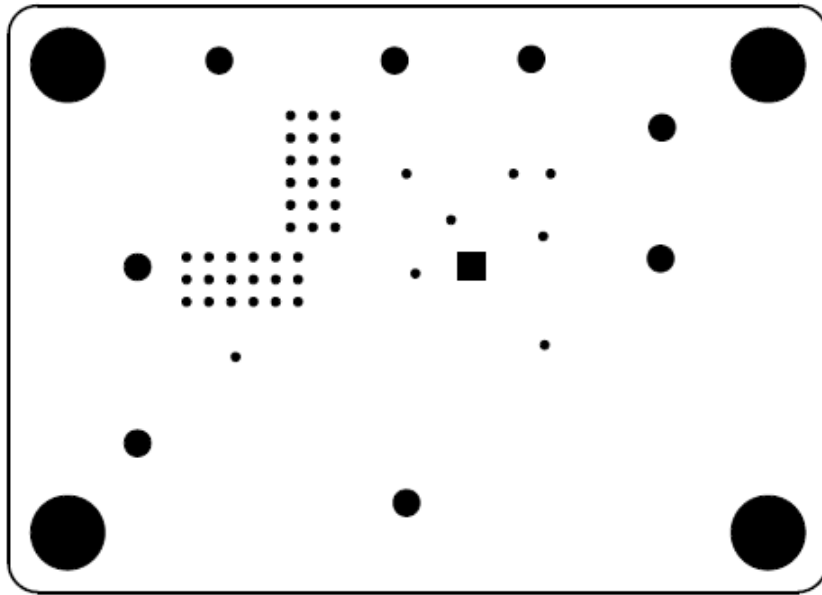
Bottom View (2nd Layer)



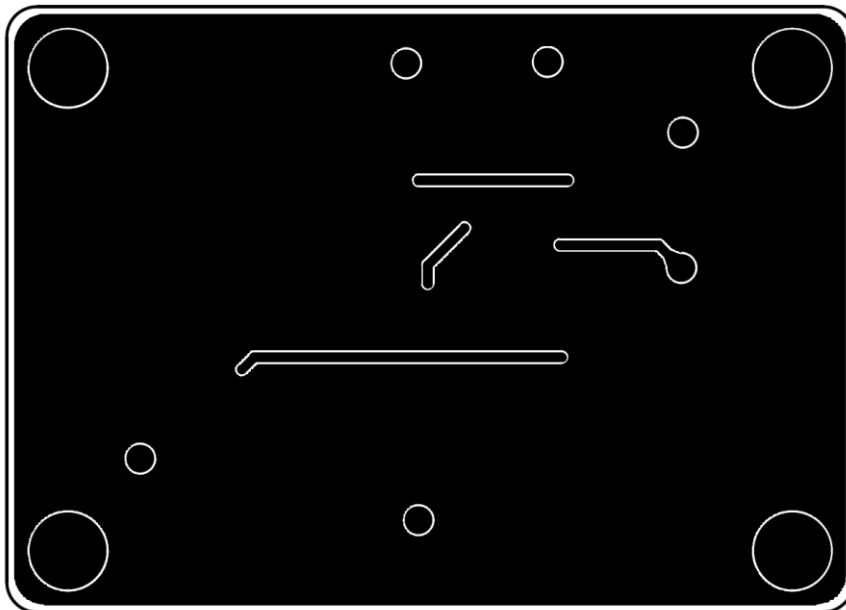
Component Placement Guide—Component Side (1st layer)



PCB Layout—Component Side (1st Layer)



Component Placement Guide—Bottom Side (2nd layer)



PCB Layout—Bottom Side (2nd layer)

More Information

For more information, please find the related datasheet or application notes from Richtek website <http://www.richtek.com>.

Important Notice for Richtek Evaluation Board

THIS DOCUMENT IS FOR REFERENCE ONLY, NOTHING CONTAINED IN THIS DOCUMENT SHALL BE CONSTRUED AS RICHTEK'S WARRANTY, EXPRESS OR IMPLIED, UNDER CONTRACT, TORT OR STATUTORY, WITH RESPECT TO THE PRESENTATION HEREIN. IN NO EVENT SHALL RICHTEK BE LIABLE TO BUYER OR USER FOR ANY AND ALL DAMAGES INCLUDING WITHOUT LIMITATION TO DIRECT, INDIRECT, SPECIAL, PUNITIVE OR CONSEQUENTIAL DAMAGES.